


# RIVERA P5000

## Folding awning

### P5000



	min. 200 cm max. 500 cm		min. 200 cm max. 700 cm
---	----------------------------	---	----------------------------

	8°–25° Wall mounting 8°–25° Top fixation
---	---

### Description

Terrace roof system comprising an aluminium extruded structure and integrated fabric shading. The structure is designed for wall and ceiling mounting and comprises two lateral carriers (dimension 80 x 150 mm). The brace in the front comprises two support profiles (120 x 80 mm) and a transverse profile (117 x 150 mm). The transverse profile also acts as a gutter and drains the water via lateral gutters as standard. To guarantee optimum drainage of the water forwards over the PVC fabric can be guaranteed, an incline of 8° up to max. 25° must be respected.

The shading consists of a fabric which folds up when retracted or tensioned when extended. The fabric is connected to cord profiles (36 x 70 mm), which vary in number depending on the projection. To prevent the ingress of water, a cord is attached to both sides of the fabric and a brush seal to the lateral guides.

**Wind resistance:** The system satisfies wind resistance class 4 when extended (tensioned fabric) or to 150 km/h when retracted. (DIN 13561 compliant)

**Cover:** Polyester fabric (630 g/m<sup>2</sup>) with polyvinyl chloride coating and high-grade surface texture making it suitable for continuous outside use. Material thickness 0.5 mm. Washable and watertight up to a water column of 3000 mm. Burning behaviour flame-resistant class B1 in accordance with DIN 4102-1.

**Drive:** Electric drive with electronic end stop to tension. Power feed 230 V/50 Hz. IP protection class 44. The force is transmitted to the front rail on both sides via a Kevlar-reinforced toothed belt

#### Option:

**Drainage:** Optionally, water can be drained away via lateral gutters or through the supports.

**Top board:** 3 bevelled plates are mounted on two square profiles (extruded aluminium dimension 50 x 120 mm). Maximum projection 972 mm.

**Integrated LED lighting:** The carrier profile contains a groove for an integrated light, which is aligned at an angle of 45° to the inside of the system, where an LED strip light (LED light source warm white) can be integrated. It is covered by a plastic reflector profile. Variants with remote control and dimmer are possible.

**Glazing:** The all-glass sliding system SV1020 can be used as front and side glazing. The fixed glazing system SV1051 is used as side glazing (e.g. as a wedge) in combination with SV1020. The max. front or side surface of 15 m<sup>2</sup> per side must not be exceeded.

**I.S.L.A. Concept:** Via specific connection fittings, the supports can be mounted in the corners of the frame profiles on flooring system SB4700.

### METHOD OF DELIVERY

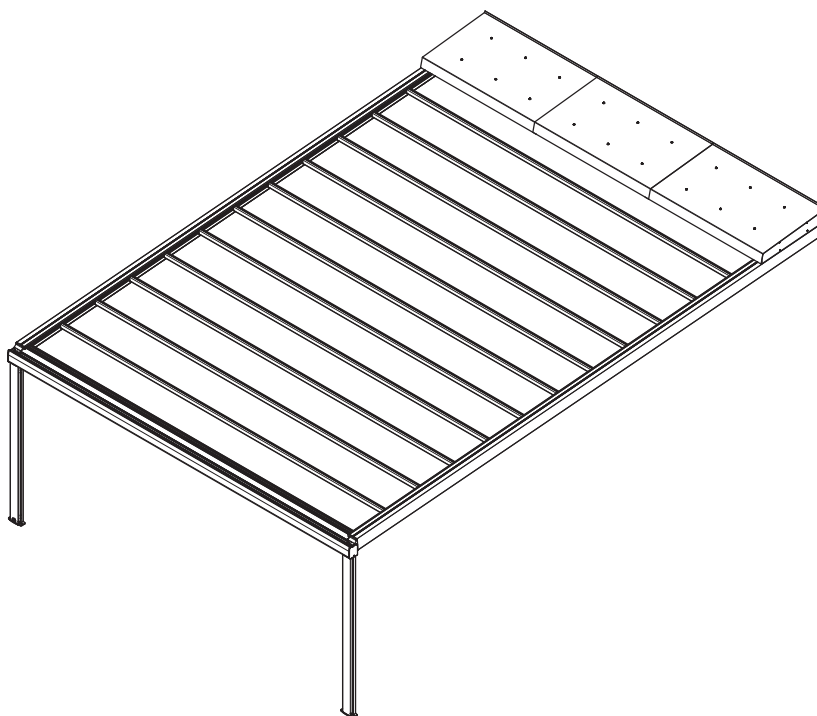
Cloth, cord profile and front rail supplied separately. Guide rails pre-mounted in longitudinal carriers, cross beam/supports supplied separately. Remaining single parts loose, without fasteners.

# RIVERA P5000

Folding awning

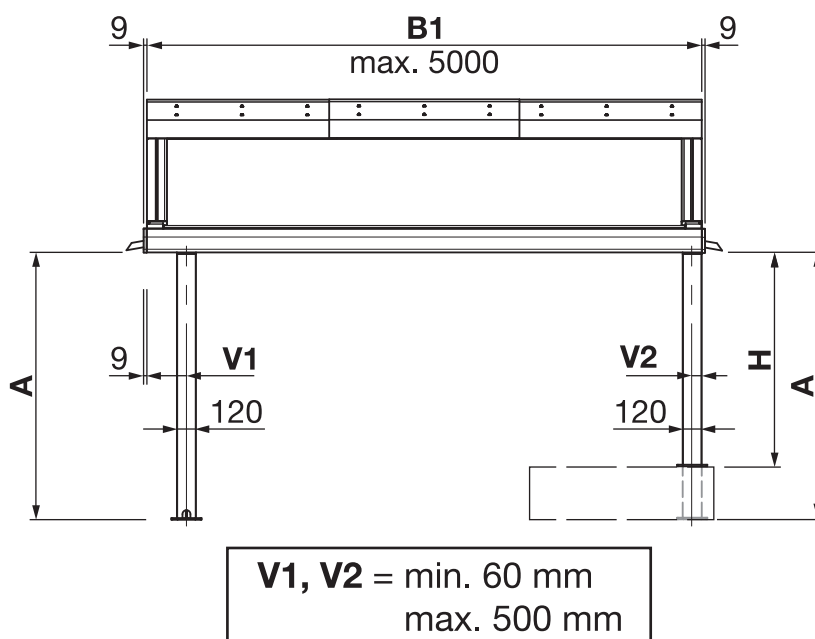
P5000

Side position



P5000

With 1 module

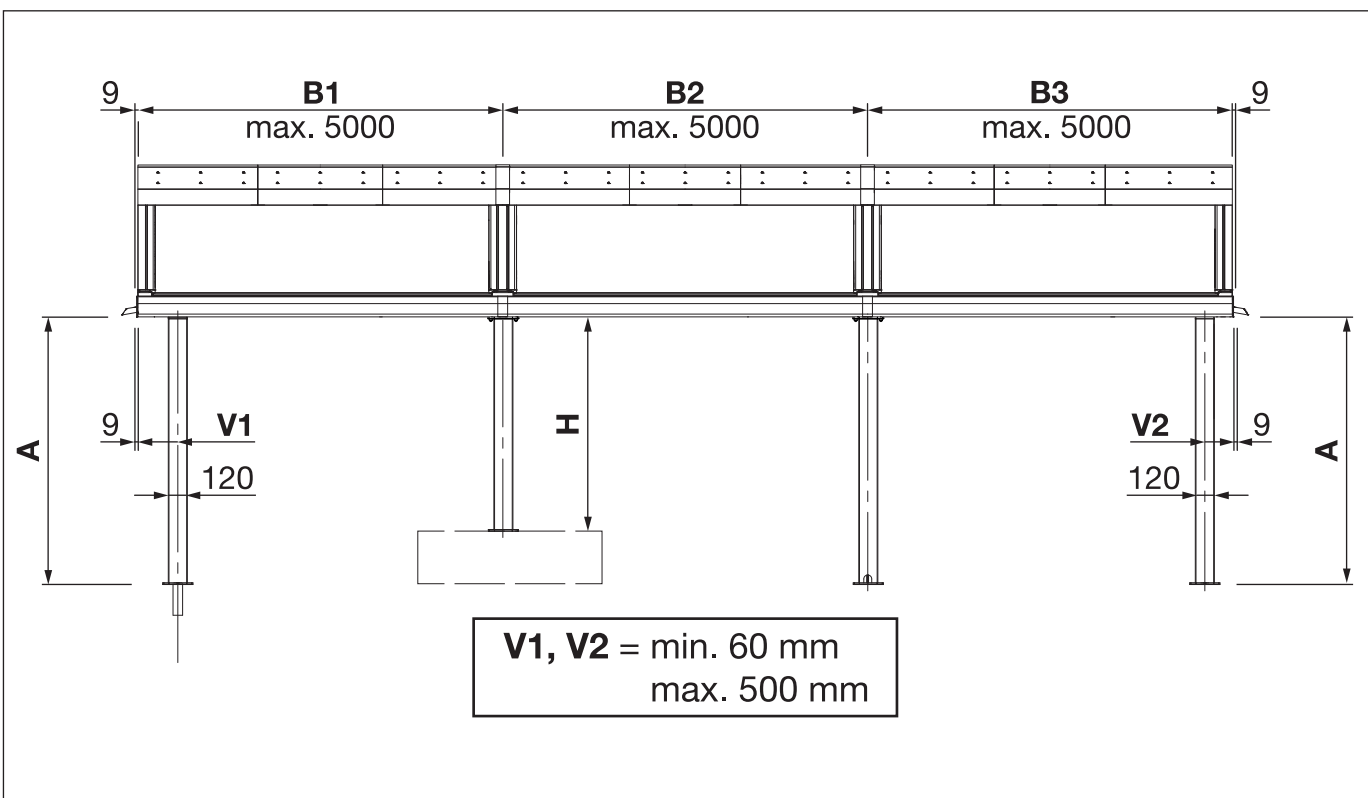


# RIVERA P5000

Folding awning

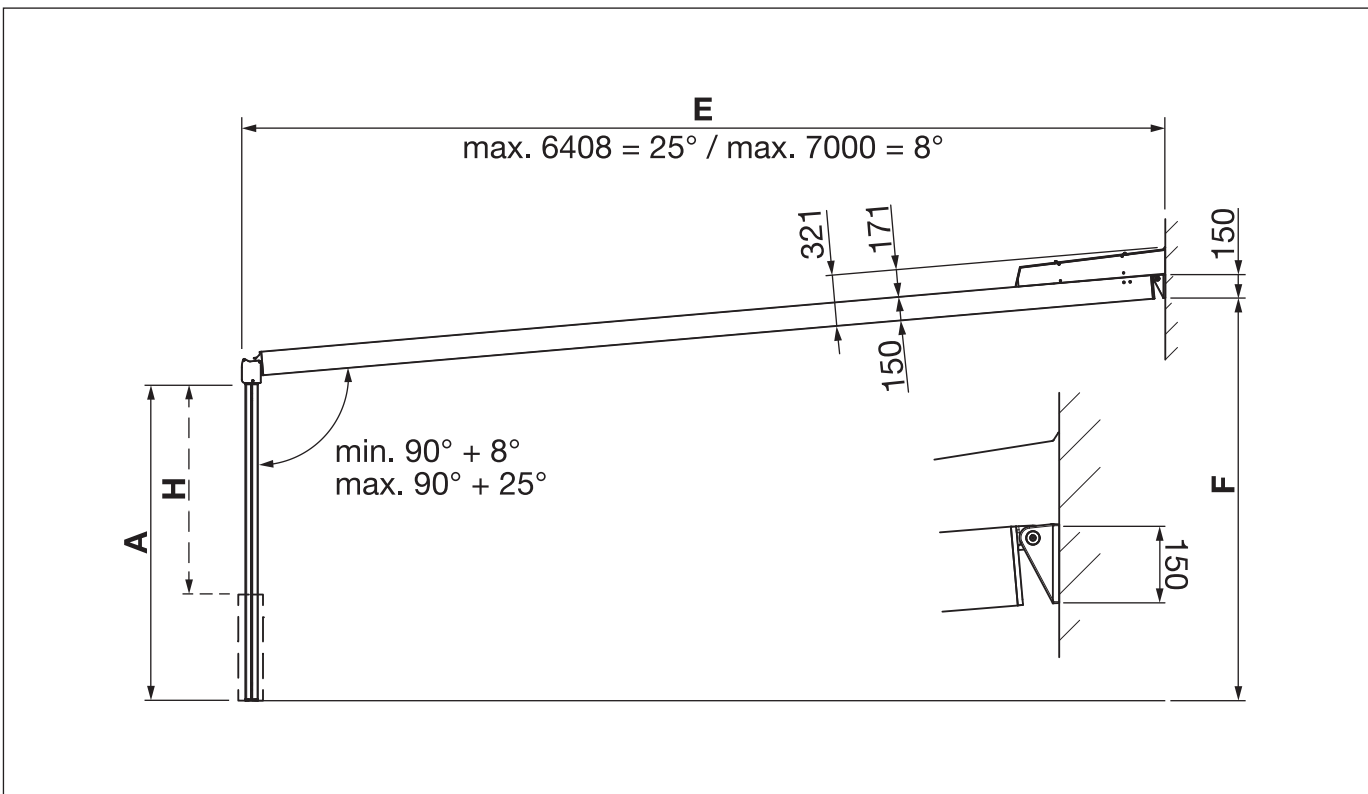
P5000

Version with max. 10 modules



P5000

Wall installation

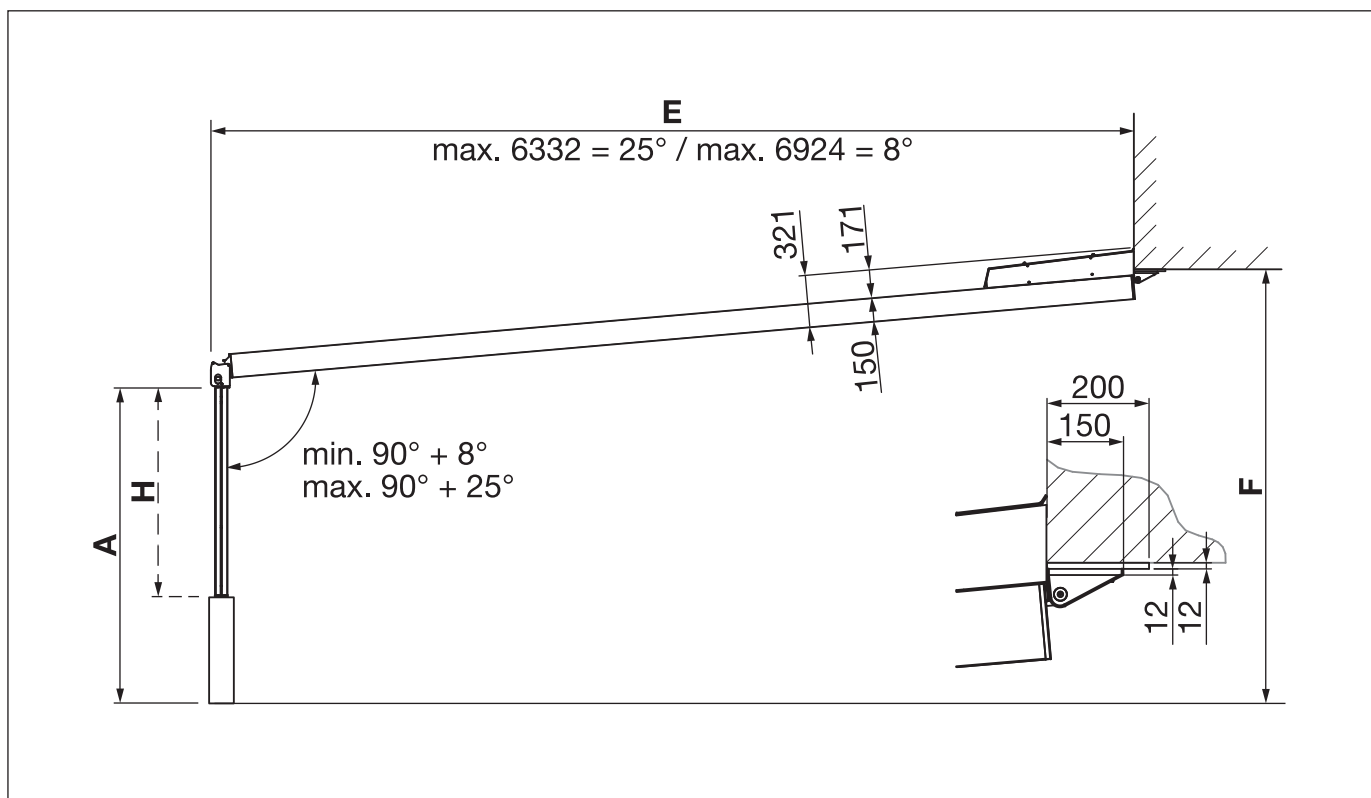


# RIVERA P5000

Folding awning

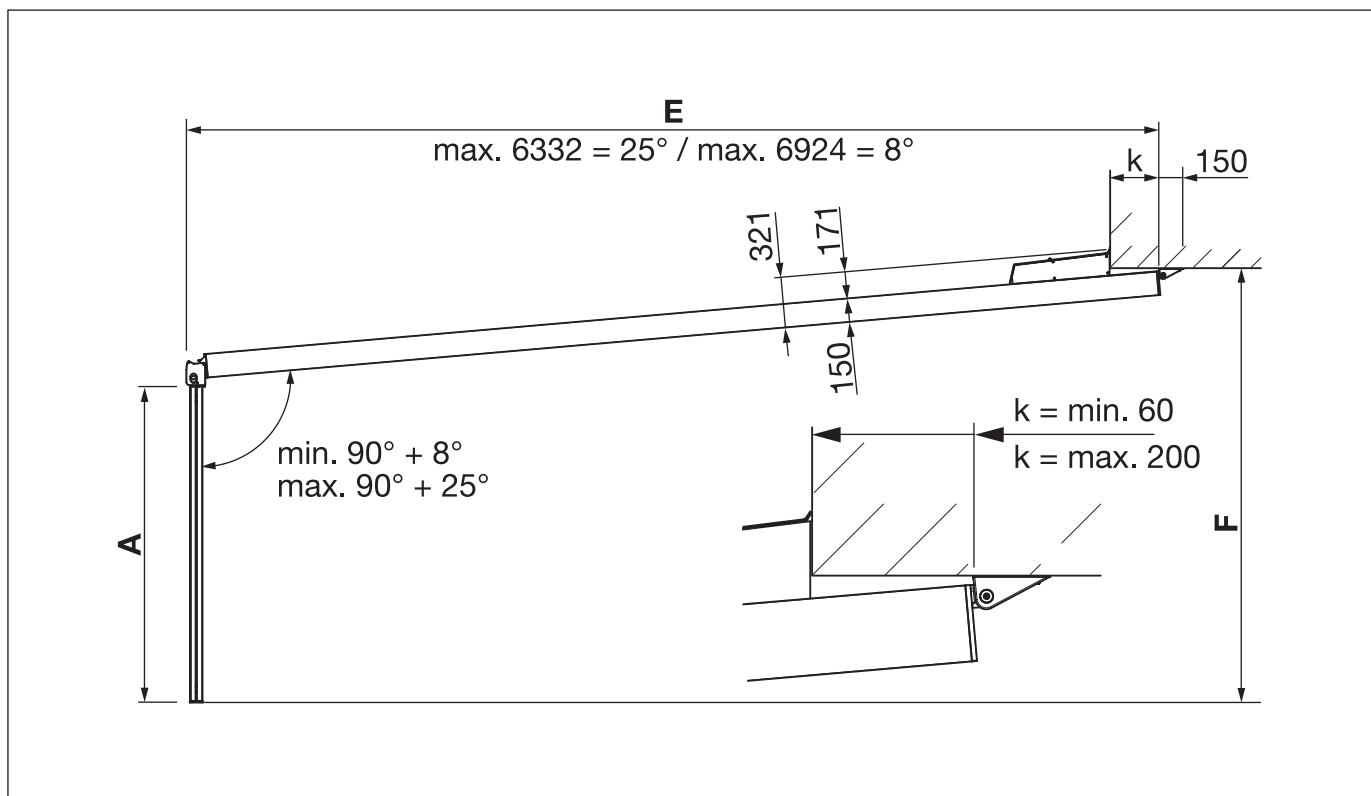
## P5000

### Roof mounting with wall bracket (flush)



## P5000

### Roof mounting without wall bracket (offset)

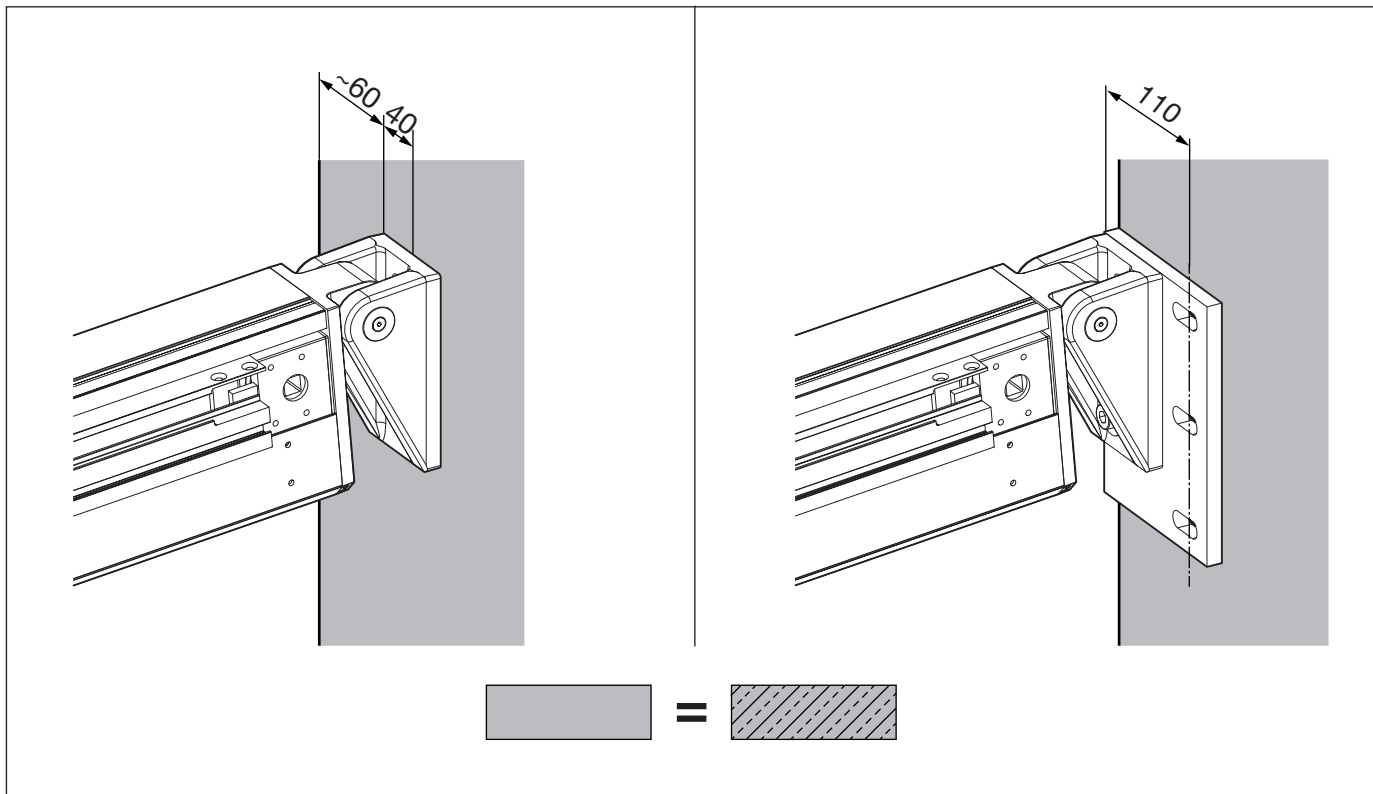


# RIVERA P5000

Folding awning

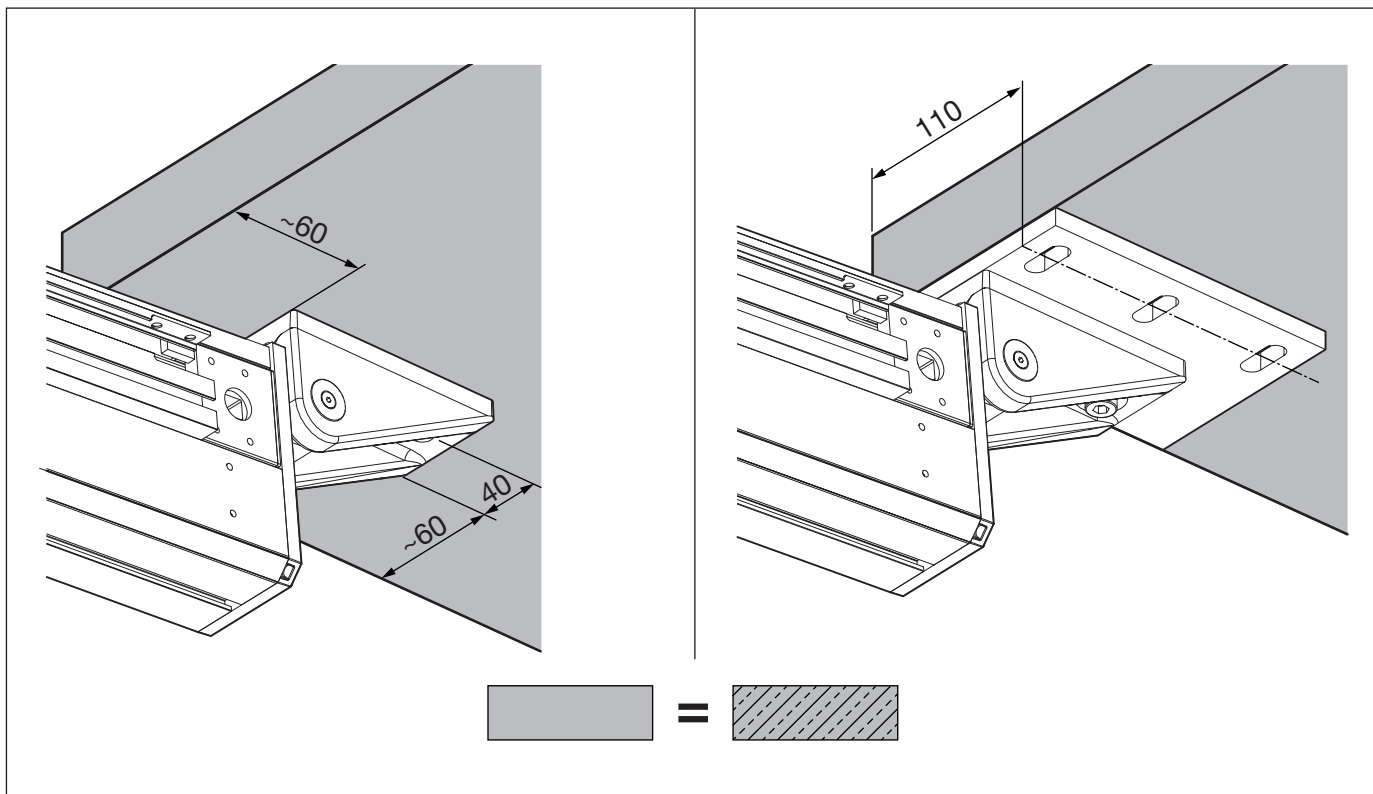
## P5000

## Wall installation



## P5000

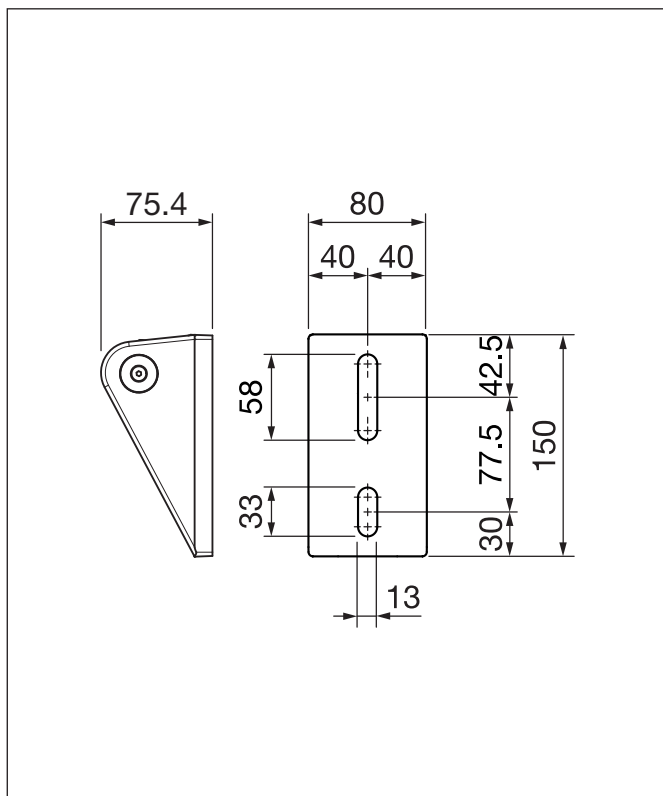
## Top installation



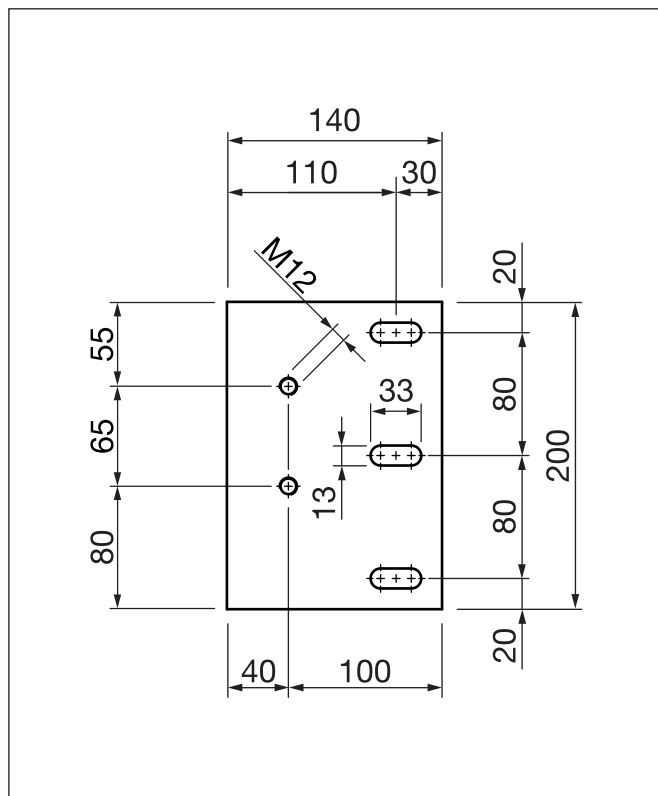
# RIVERA P5000

Folding awning

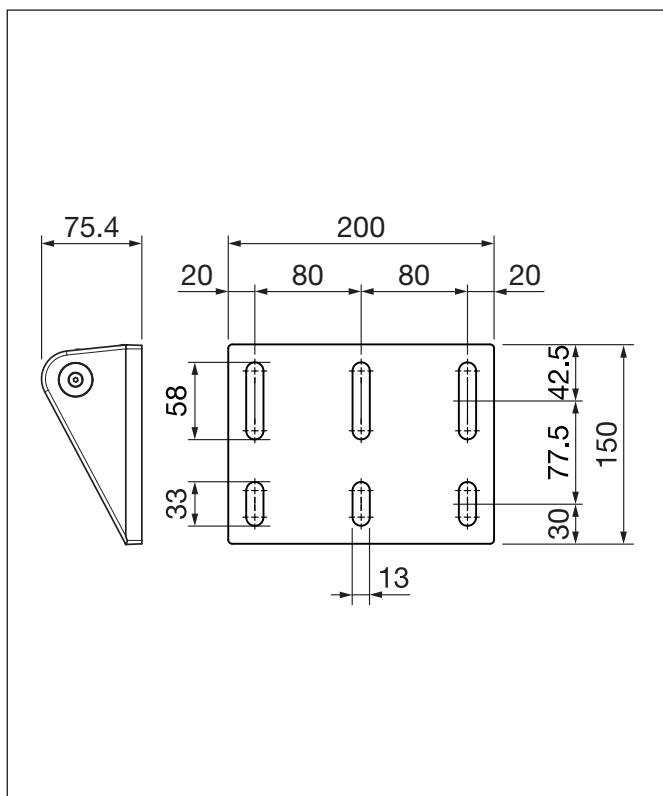
## P505/. Connecting piece (for P521)



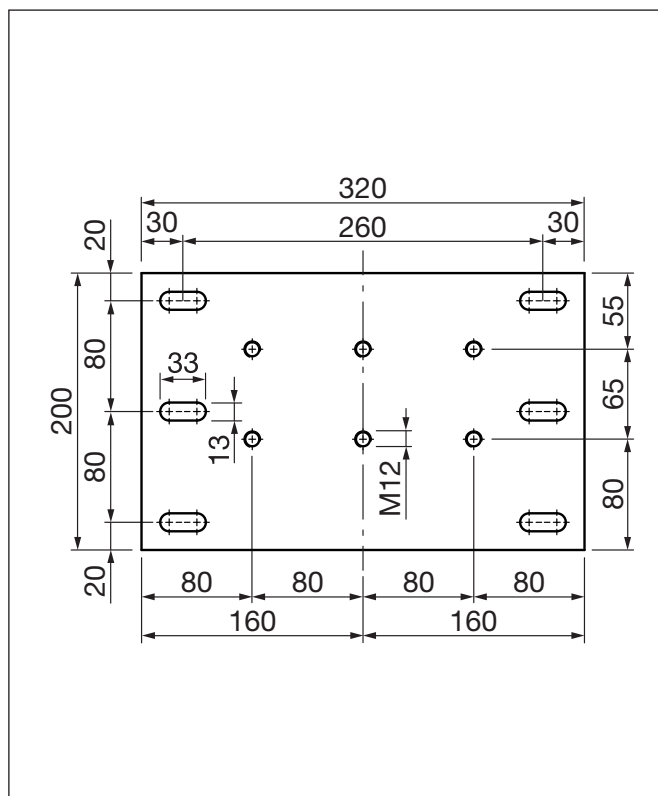
## P521 Wall bracket



## P530 Connecting piece (for P531)



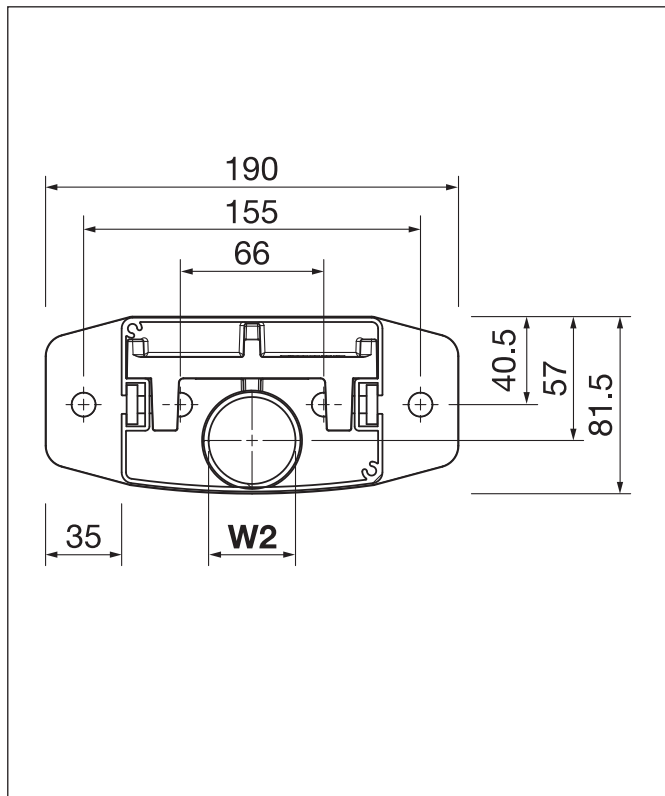
## P521 Wall bracket (centre)



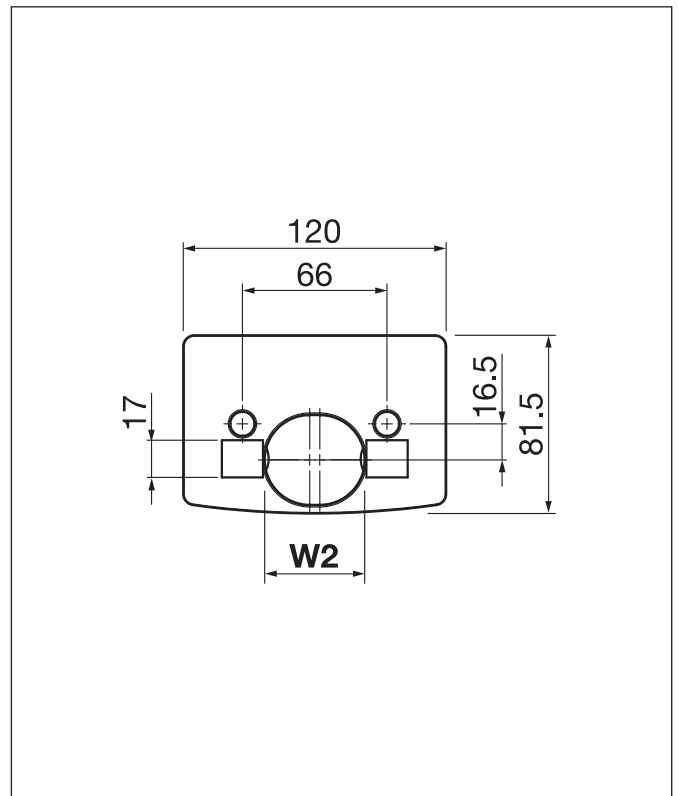
# RIVERA P5000

Folding awning

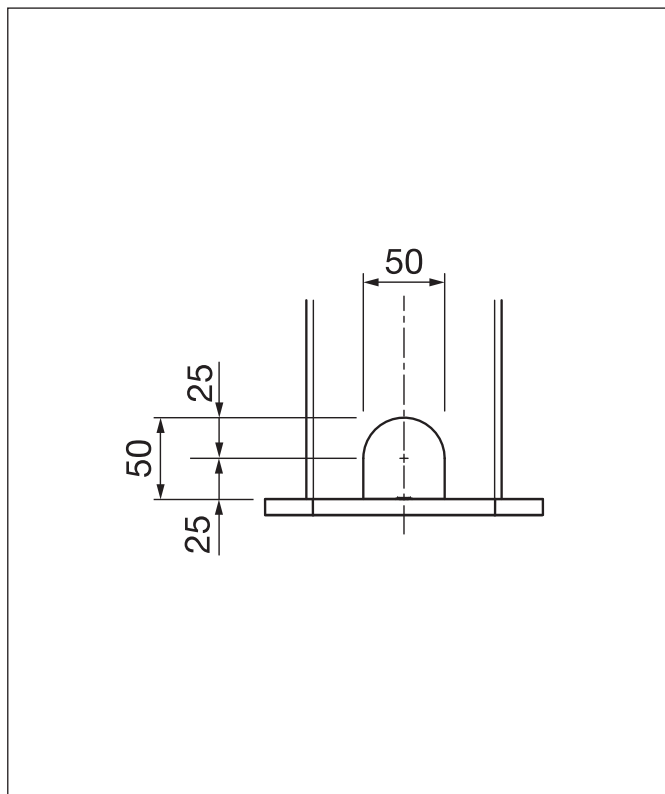
## P809/5 Foot plate with lug



## P809/4 Headpiece



## W3 = Support with Drainage hole

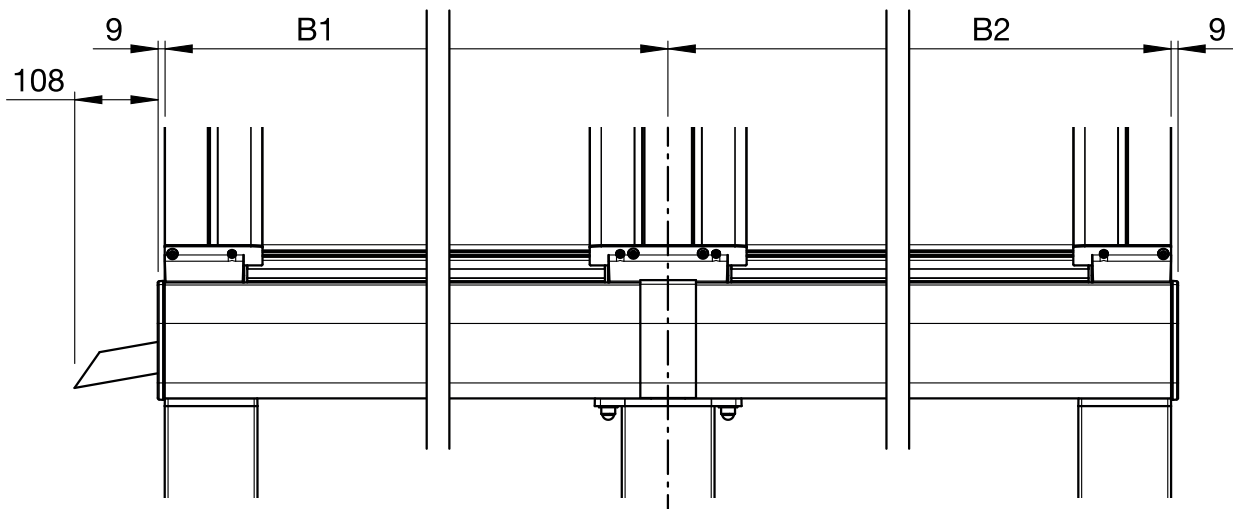


# RIVERA P5000

Folding awning

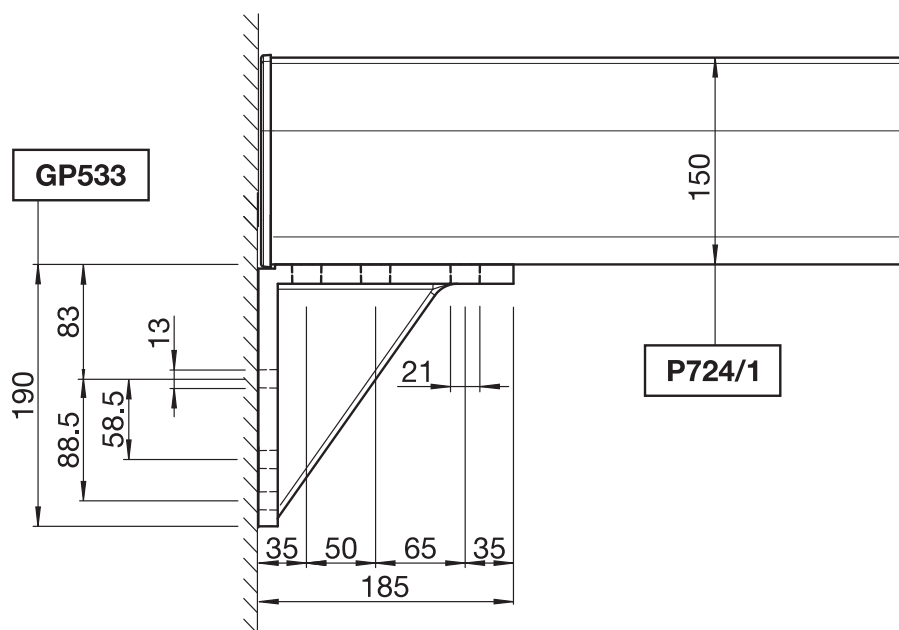
P5000

2 modules coupled



P5000

Side assembly of the gutter





# RIVERA P5000

Folding awning

P5000

Fabric track with cover board


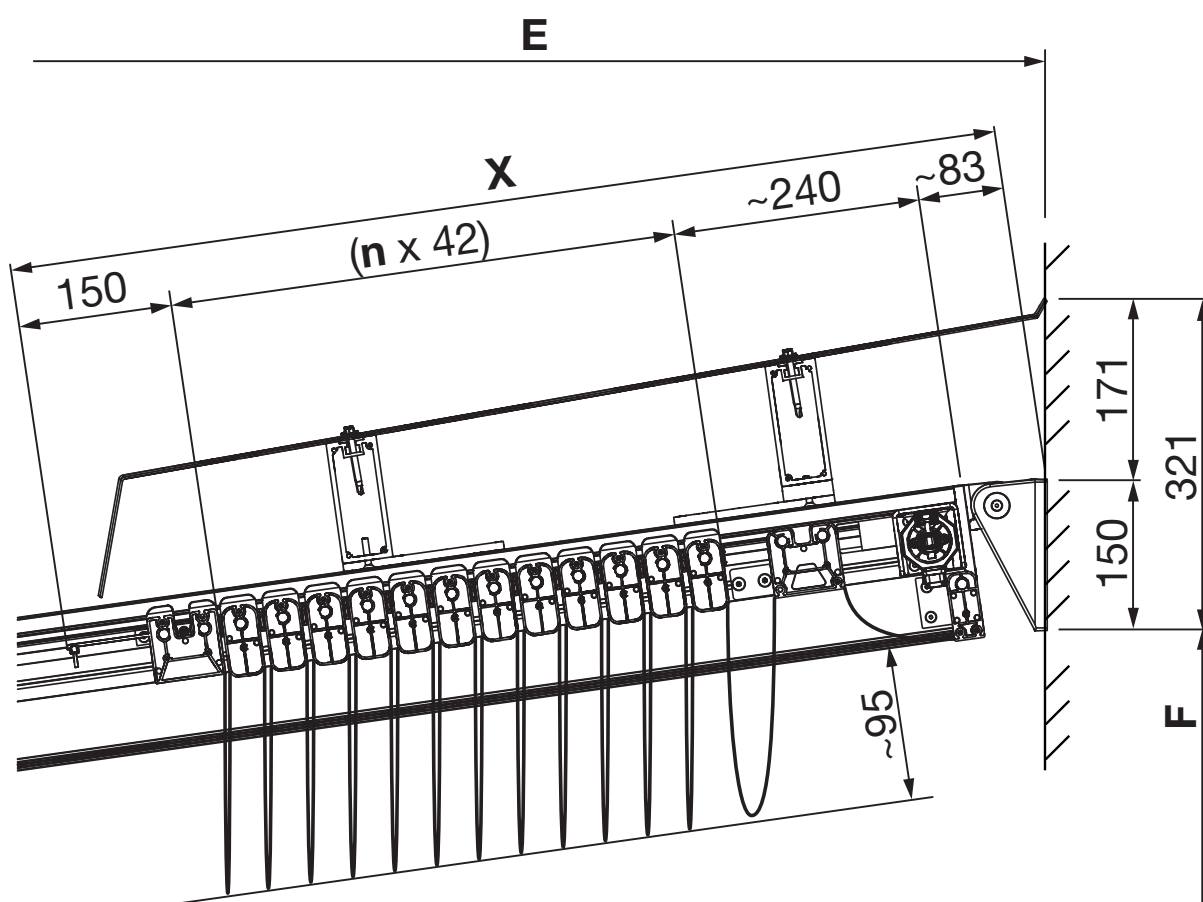
	2000	2500	3000	3500	4000	4500	5000	5500	6000	6500	7000
<b>X =</b>	599	641	683	725	767	809	851	893	935	977	1019
<b>n =</b>	3	4	5	6	7	8	9	10	11	12	13

Table valid at 8 ° inclination and wall mounting

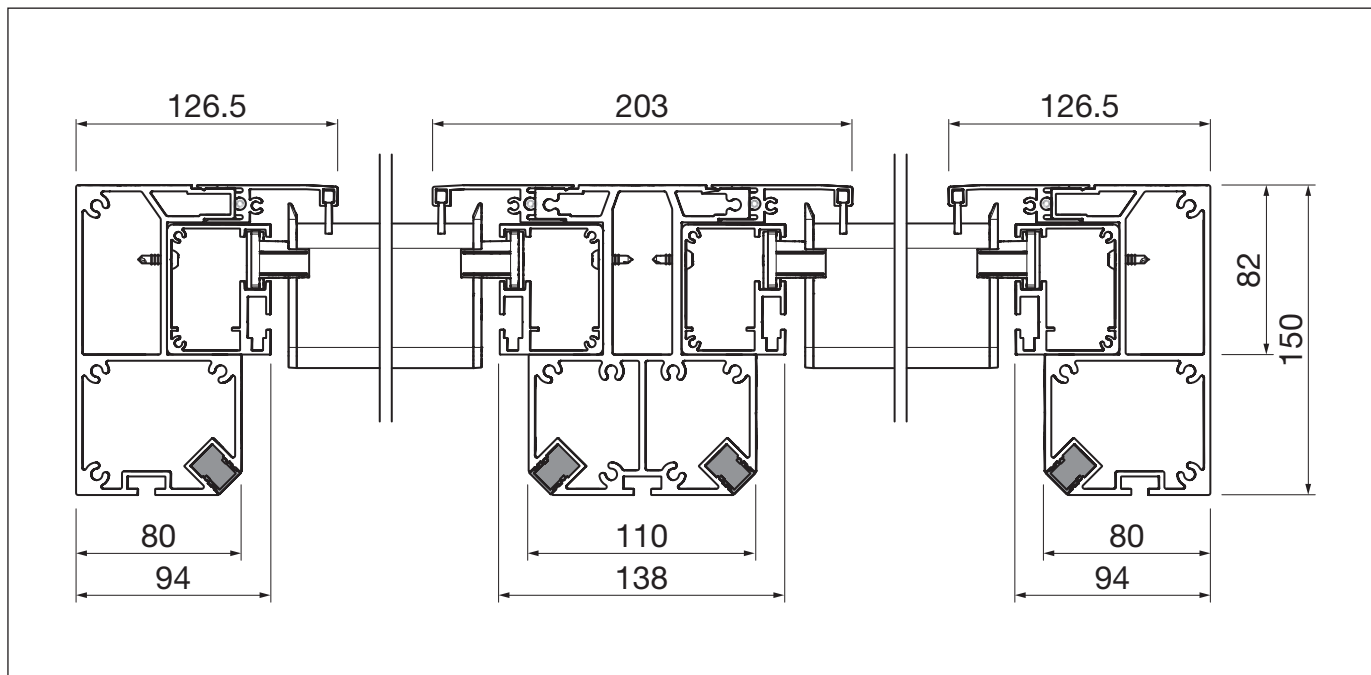


# RIVERA P5000

Folding awning

## P5000

## Lighting



## P5000

## LED strips SL115 - SL160

		150	200	250	300	350	400	450	500	550	600 cm
EZ603-4	<b>SL115</b> 2 x 12W = 24W	12W									
		12W									
	<b>SL120</b> 2 x 16W = 32W		16W								
			16W								
	<b>SL125</b> 2 x 20W = 40W			20W							
				20W							
	<b>SL130</b> 2 x 24W = 48W				24W						
					24W						
EZ603-5	<b>SL135</b> 2 x 28W = 56W				28W						
					28W						
	<b>SL140</b> 2 x 32W = 64W					32W					
						32W					
	<b>SL145</b> 2 x 36W = 72W						36W				
							36W				
	<b>SL150</b> 2 x 40W = 80W							40W			
								40W			
EZ603-5	<b>SL155</b> 2 x 44W = 88W								44W		
									44W		
EZ603-5	<b>SL160</b> 2 x 48W = 96W									48W	
										48W	

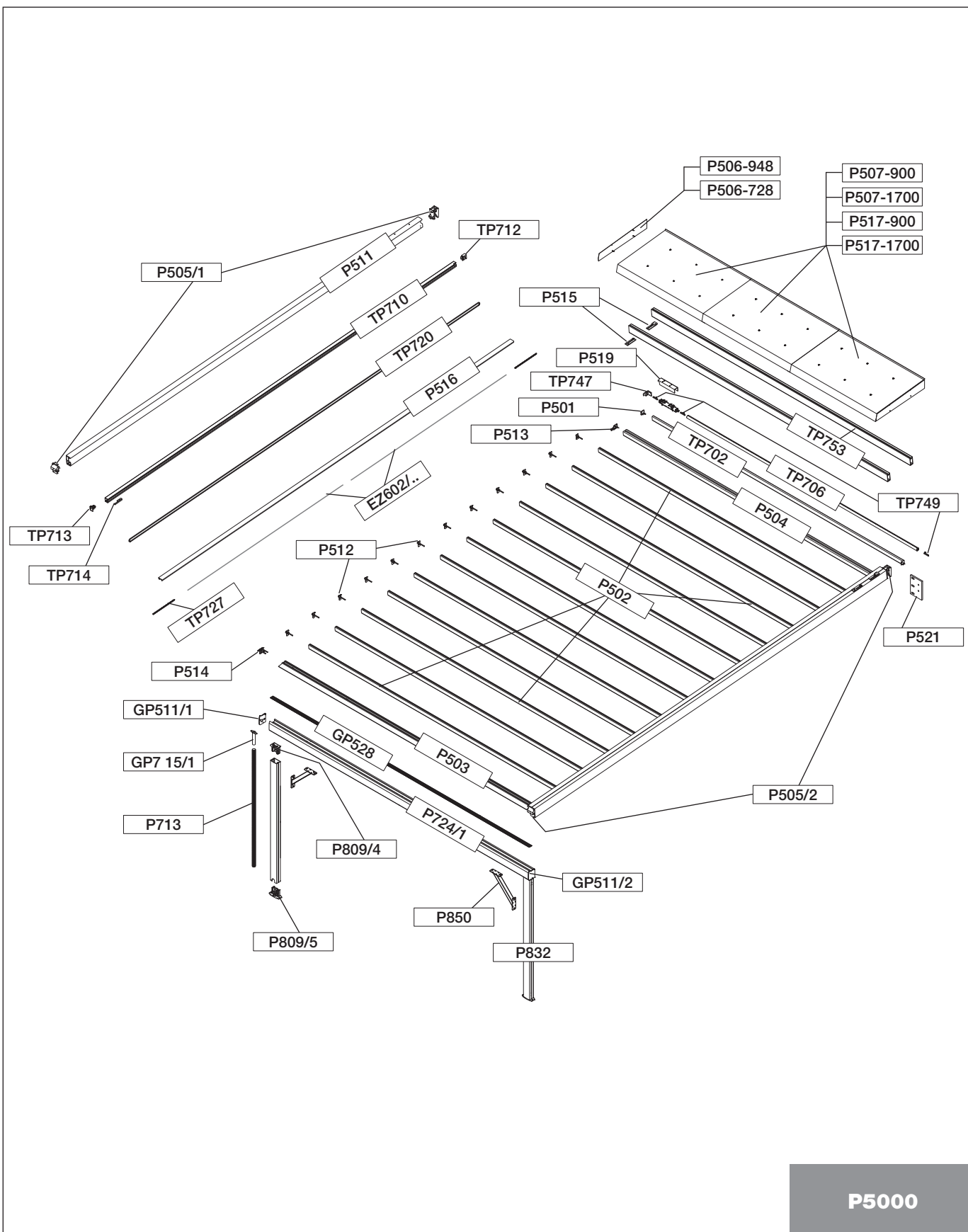
LED strips inclusive 600 cm Electrical cable

# RIVERA P5000

Folding awning

P5000

Exploded view with 1 module



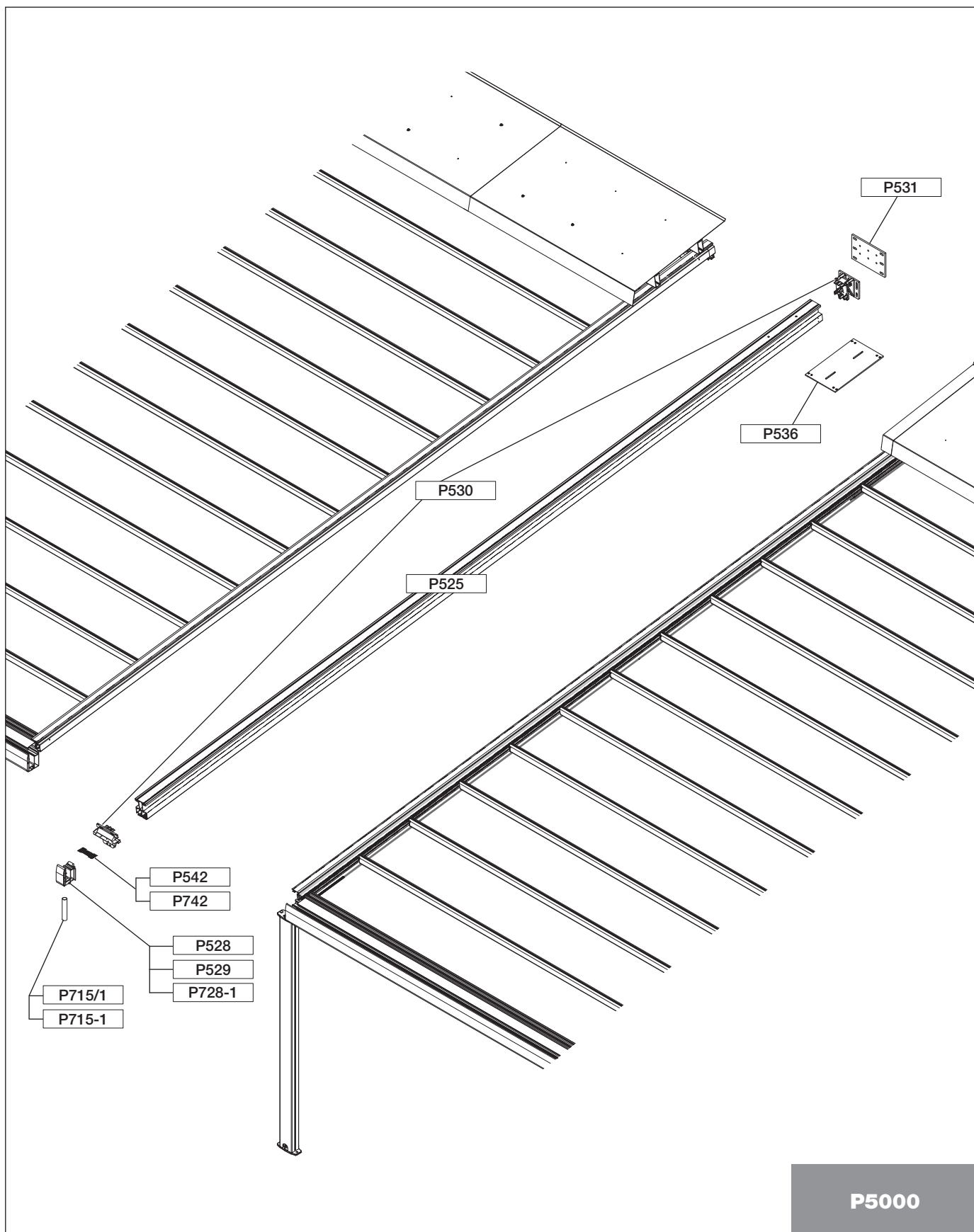
P5000

# RIVERA P5000

Folding awning

P5000

Exploded view with 2 - 10 modules



P5000

# RIVERA P5000

## Folding awning

### P5000

### Components list

P501	for TP702	Fabric holder		pc.
P502		Fabric support profile	500 cm	pc.
P503		Fabric support profile width	500 cm	pc.
P504		Fabric support profile width	500 cm	pc.
P505/1 P505/2	left right	Connecting piece		pc. pc.
P506-728 P506-948	for P507-... for P517-...	Cover lateral (Canopy)	74 cm 96 cm	pc. pc.
P507-900 P507-1700		Sheet roof (Canopy)	75.2 cm 75.2 cm	pc. pc.
P508	for P507-...	Sheet roof coupling (for 2 - 3 adjacent modules)	75.2 cm	pc.
P511		Beam	700 cm	pc.
P512	for P502	End cover fitting		pc.
P513	for P504	End cover fitting		pc.
P514	for P503	End cover fitting		pc.
P515		Protective roof fitting		pc.
P516		Cover	700 cm	pc.
P517-900 P517-1700		Sheet roof (Canopy)	97.2 cm 97.2 cm	pc. pc.
P518	for P517-...	Sheet roof coupling (for 2 - 3 adjacent modules)	97.2 cm	pc.
P519		Motor holder		pc.
P521	for P505/.	Wall bracket		pc.
P525		Double carrier	700 cm	pc.
P528	for P724/1	Gutter coupling with water drainage		pc.
P529	for P724/1	Gutter coupling		pc.
P530	centre	Connecting piece		pc.
P531	for P530	Center wall bracket		pc.
P536		Center coverboard set		pc.
P542	for P528	Drain sieve		pc.
P703	for P713	Hose clip		pc.
P713	for P715/1	Hose		lm
P715/1	for P724/1	Drainage		pc.
P715-1	for P528	Stub tube		pc.
P724/1		Gutter	400 cm 500 cm 600 cm 700 cm	pc. pc. pc. pc.
P728/1	for P724/1	Gutter coupling		pc.
P742	for P529	Drain sieve		pc.
P809/4	for P832	Headpiece		pc.
P809/5	for P832	Foot plate with lug		pc.

# RIVERA P5000

## Folding awning

### P5000

### Components list

P832		Post profile	700 cm	pc.
P850		Corner reinforcement		pc.
GP511/1 GP511/2	left right	Gutter cover fittings		pc. pc.
GP511/4 GP511/5	left right	Gutter cover with gutter fittings		pc. pc.
GP528	for P724/1	Drain sieve	200 cm	pc.
GP533	for P724/1	Wall bracket		pc.
TP702		Fabric support profile	500 cm	pc.
TP706		Motor shaft	500 cm	pc.
TP710		Guide profile	700 cm	pc.
TP712		Drive fitting		pc.
TP713		Pulley kit		pc.
TP714		Holding bracket		pc.
TP720		Toothed belt		pc.
TP727		Inner cover		pc.
TP747		Holder		pc.
TP749		Motor holding bracket		pc.
TP753		Beam (Canopy)		pc.
EZ602/150 EZ602/200 EZ602/250 EZ602/300		Plastic cover	150 cm 200 cm 250 cm 300 cm	pc. pc. pc. pc.
EZ603-4 EZ603-5		LED converter	90 W 24 V 120 W 24 V	pc. pc.
MZ234		Junction box IP55		pc.
SL115 SL120 SL125 SL130 SL135 SL140 SL145 SL150 SL155 SL160		LED strips inclusive 600 cm Electrical cable	150 cm 200 cm 250 cm 300 cm 350 cm 400 cm 450 cm 500 cm 550 cm 600 cm	pc. pc. pc. pc. pc. pc. pc. pc. pc. pc.

# RIVERA P5000

## Folding awning

**P501**



**P505/2**



**P512**



**P502**



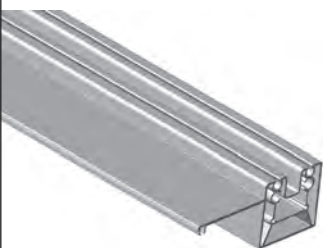
**P506-....**



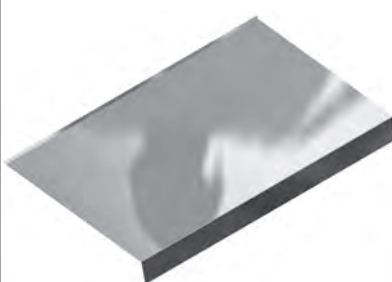
**P513**



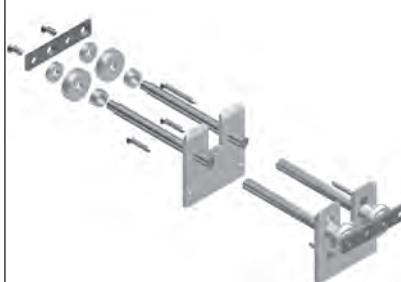
**P503**



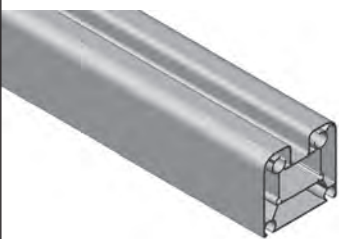
**P507-....**



**P514**



**P504**



**P508**



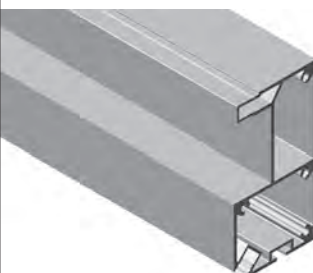
**P515**



**P505/1**



**P511**



**P516**

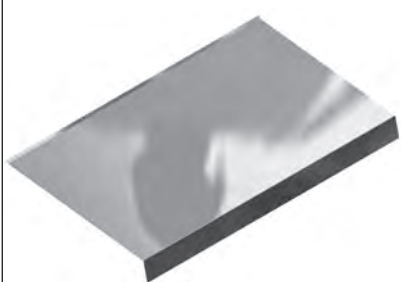




# RIVERA P5000

Folding awning

**P517-....**



**P528**



**P542**



**P518**



**P529**



**P703**



**P519**



**P530**



**P713**



**P521**



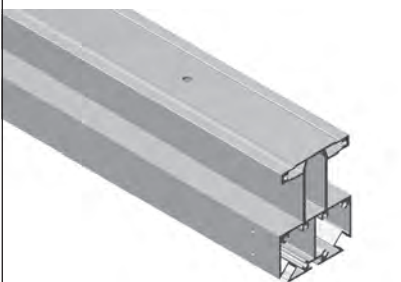
**P531**



**P715/1**



**P525**



**P536**



**P715-1**

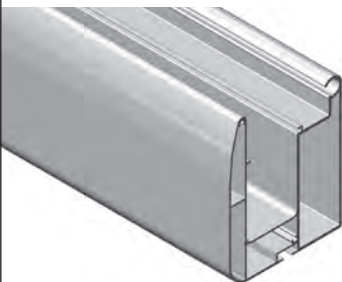




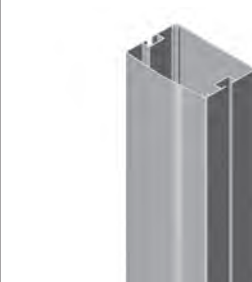
# RIVERA P5000

## Folding awning

**P724/1**



**P832**



**GP511/5**



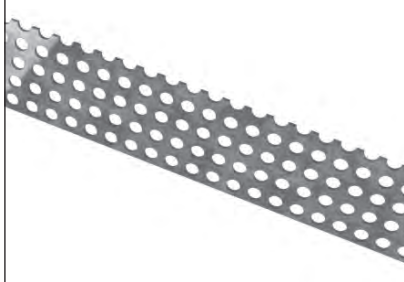
**P728/1**



**P850**



**GP528**



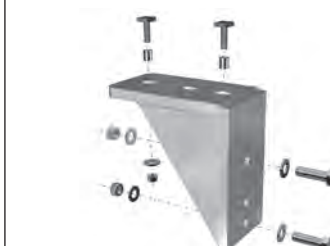
**P742**



**GP511/1**



**GP533**



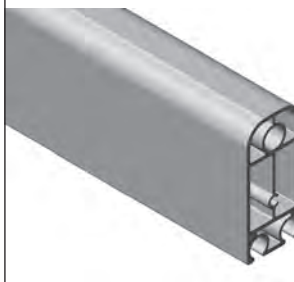
**P809/4**



**GP511/2**



**TP702**



**P809/5**



**GP511/4**



**TP706**



# RIVERA P5000

Folding awning

**TP710**



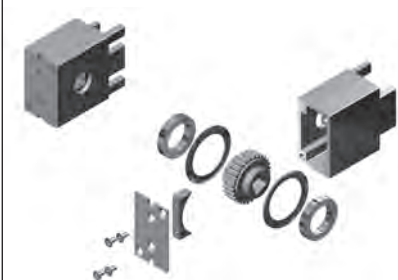
**TP727**



**EZ603/.**



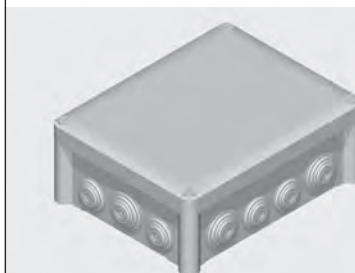
**TP712**



**TP747**



**MZ234**



**TP713**



**TP749**



**SL115 - SL160**



**TP714**



**TP753**



**TP720**



**EZ602/...**

